

Whistler Nordic Competition Venue

MUNICIPAL ENGINEERING AWARD OF MERIT

Sandwell Engineering Inc.

In August 2004, VANOC selected Sandwell Engineering Inc. as the prime consultant to design the Whistler Nordic Centre, which will be the site of cross-country skiing, ski jumping, biathlon and other Nordic-combined competitions during the 2010 Olympic Winter Games. Located 22-kilometres south of Whistler in the Callaghan Valley, the competition venue includes ski jumps, biathlon facilities and three stadiums with a projected spectator capacity of 12,000 people in each facility, to be achieved through temporary seating and standing room for people in the finish areas and along 50 to 100 kilometres of trails.

The project required progressive thinking and innovation on behalf of the design team to address the challenging elements of site topography, climatic conditions, environmental concerns, unique structural requirements and site accessibility.

Design and construction proceeded responsibly and with due sensitivity to environmental and sustainability concerns encompassing the venue's three main facilities. The project was successful in minimizing the overall impact on the environment while enhancing the visual impression of each facility by blending them in with existing topography and vegetation. The facility was completed within budget and declared ready for commercial use in December 2007, allowing for more than two years of athlete training and competition prior to the 2010 Games.



Client/Owner • VANOC
Location • Callaghan Valley, B.C.
Component • Entire Project
General Contractors • Resource Business Ventures, Emil Anderson Construction, Newhaven Construction
Other Consultants • Merrick Architecture, Stantec Consulting Ltd., CJP Architects, Golder Associates Ltd., Ecosign Mountain Resort Planners Ltd., J.M. Bean & Co. Ltd., TBKG Consultants Inc.

Whistler Sliding Centre

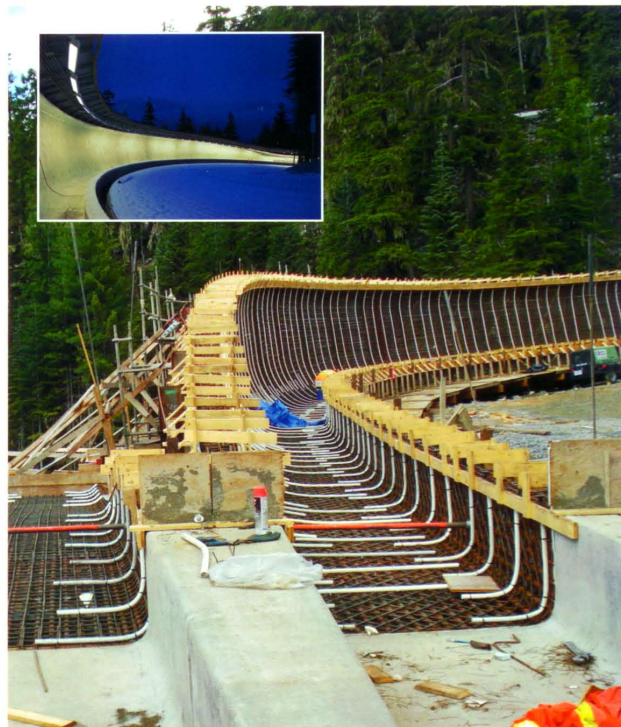
MUNICIPAL ENGINEERING AWARD OF MERIT

Stantec Consulting Ltd. with Golder Associates Ltd.

Located on Blackcomb Mountain, the Whistler Sliding Centre will host the bobsleigh, luge and skeleton events at the 2010 Olympic Winter Games. The project features a new 1,700-metre sliding track with 16 corners, refrigeration facilities, numerous permanent structures including start and weigh houses, sport and track operation buildings, control tower and a maintenance facility. Other features include a storage area for 50 sleds and a proposed venue capacity of 12,000 spectators.

Jointly submitted by Stantec Consulting Ltd., which was responsible for the general site and civil engineering components, and Golder Associates Ltd., which provided geotechnical and environmental expertise, the competition venue was completed on schedule and within approved budgets.

This project illustrates a wide range of technical excellence and innovation in venue design, track layout, refrigeration piping and plant systems, building components, snow management, municipal infrastructure and roadway design, including provisions for Olympic overlay requirements. An emphasis on sustainability, with a commitment to construction and operation, and the use of best management practices were key in the reduction of environmental impacts. The design team was able to meet the challenges of this unique project and provide cost-effective and innovative lifecycle solutions that conserve energy and preserve the natural environment.



Client/Owner • VANOC
Location • Whistler, B.C.
Component • Entire Project
General Contractor • Heatherbrae Construction
Other Consultants • Stantec Architecture Ltd., Stonefield Development Consultants, EBA Engineering Consultants